

BEST TREATMENT BRINGS WONDERFUL LIVES

Betta Medical Technology (Wuxi) Co., Ltd.

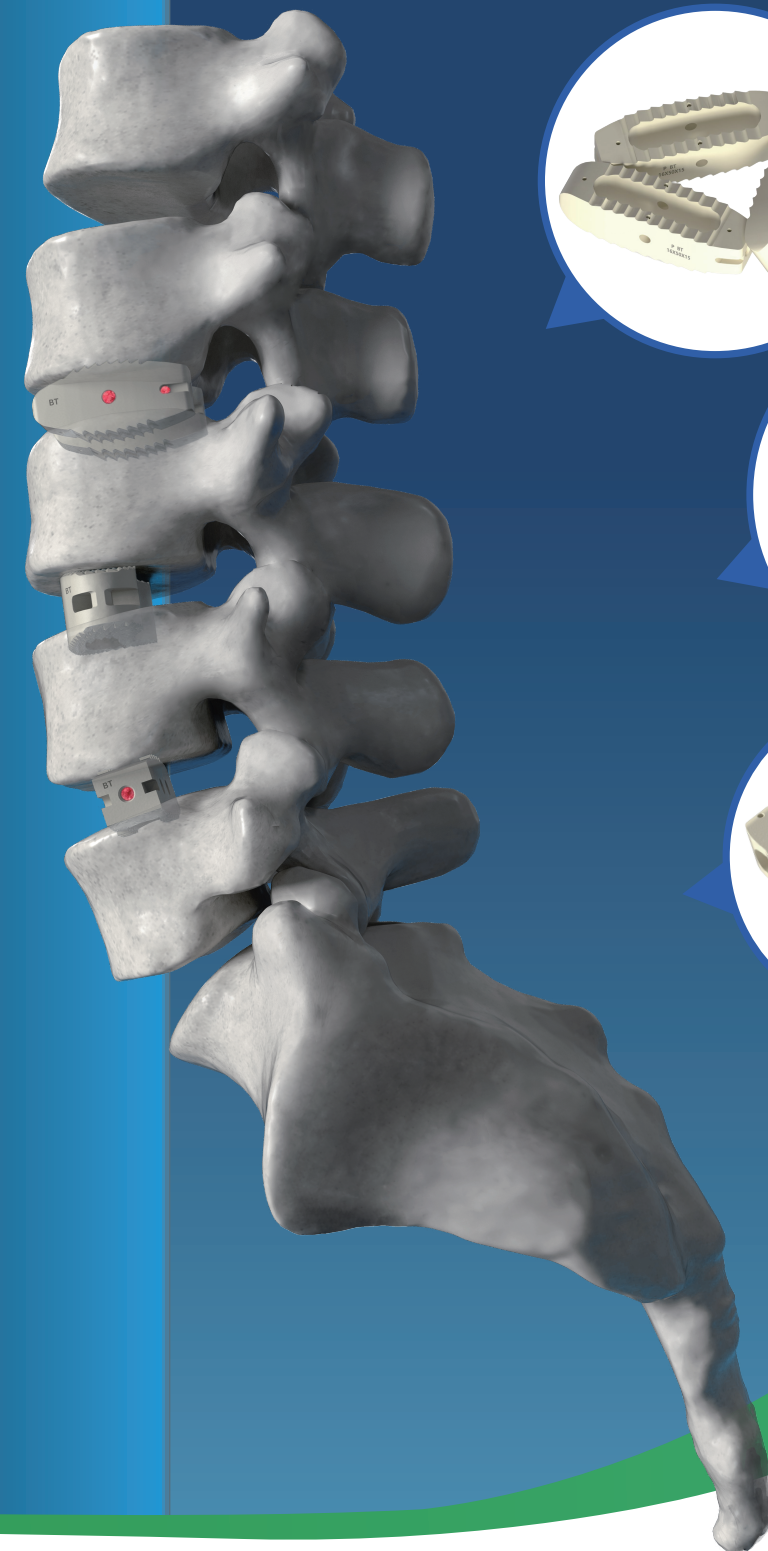


Tel: 0086 (510) 83588827

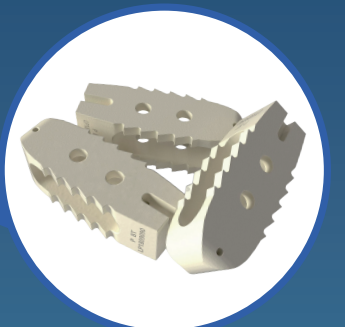
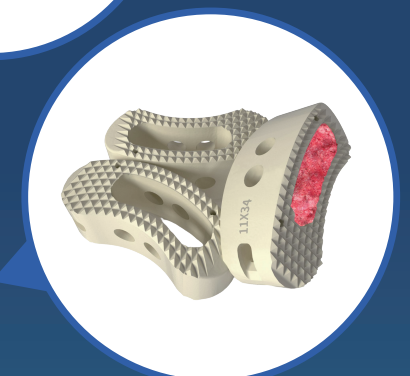
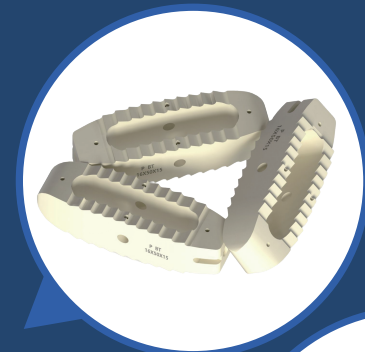
Add : Zone B, 1st Floor of No.7 Building
Area C, No.1699 Huishan Ave Hui-
shan Economic Development Zone
214174 Wuxi, Jiangsu Province
PEOPLE'S REPUBLIC OF CHINA

www.bettatec.com | **BettaTech®**

INTERBODY FUSION CAGE SYSTEM



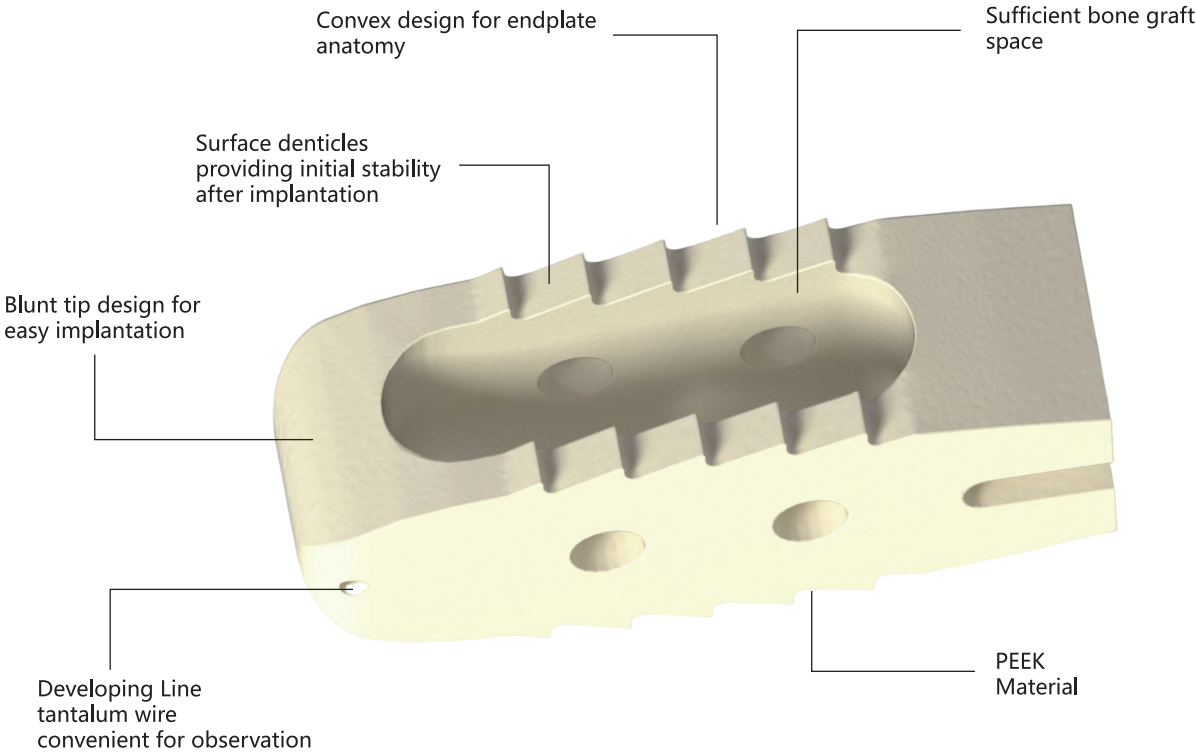
INTERBODY FUSION CAGE SYSTEM



BettaTech®

Introduction

The interbody fusion cages have the effects of preserving and retaining spinal stability. They feature an anatomical shape, dentate border and large central opening design, can restore the intervertebral immediately and get maximal range of osseous fusion. PEEK materials have fine histocompatibility and chemical inertia. The markers in the cage are fluoroscopy opaque adapting to cage place adjustment. Optimal instruments allow implant placement, location adjustment and management of endplate effectively. Together with stable screw system fixation, the cage can facilitate interbody osseous fusion as well as maintenance the height of intervertebral space.

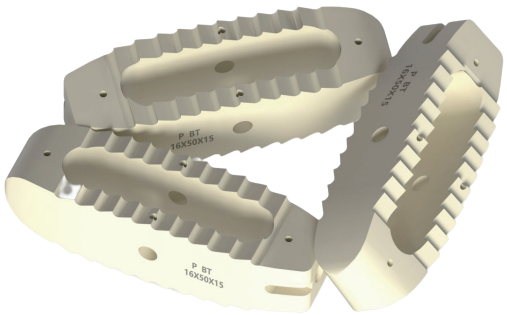


Indications

- Degenerative discopathy and spinal instability
- Degenerative or isthmic spondylolisthesis
- Revision surgery for failed disc operation
- Lumbar pseudarthrosis or failed interbody fusion
- It is not recommended to be used alone, it should be used in conjunction with the nail bar system

Features & Benefits

- Radiolucent PEEK material allows the growth of the bone through the center hole of the cage to be visualized - built-in X-ray markers for cage visualisation
- The elastic modulus of Peek material is between cancellous bone and cortical bone
- Sharp teeth on implant surface promote primary stability and prevent cage migration
- Curved and wedge - shaped design accommodates endplate shape variance
- The external surfaces have no corners allowing for ending in minimized neural injury
- Allows for access to tight disc areas and optimized positioning of the implant



Components

P-TYPE (plif)	Height	Length	Width	P/N
	(8-14) Every 1mm is Interval	22 26 32 36mm	10mm	31660822-31721436
T-TYPE (tlif)	Height	Length	Width	P/N
	(8-14) Every 2mm is Interval	22 26 32 36mm	10 12mm	31760830-31861434
X-TYPE (olif)	Height	Length	Width	P/N
0° Angle	(9-16) Interval 2mm	(40-55) Interval 5mm	22mm	33130940-33161655
6° Angle	(9-16) Interval 2mm	(40-55) Interval 5mm	22mm	33170940-33201655

